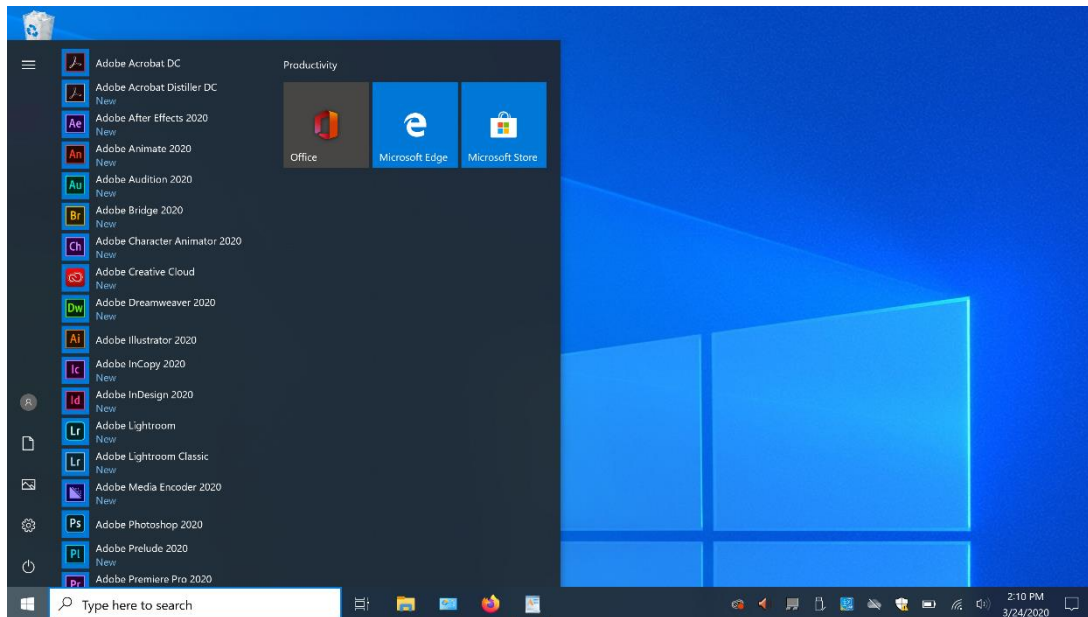
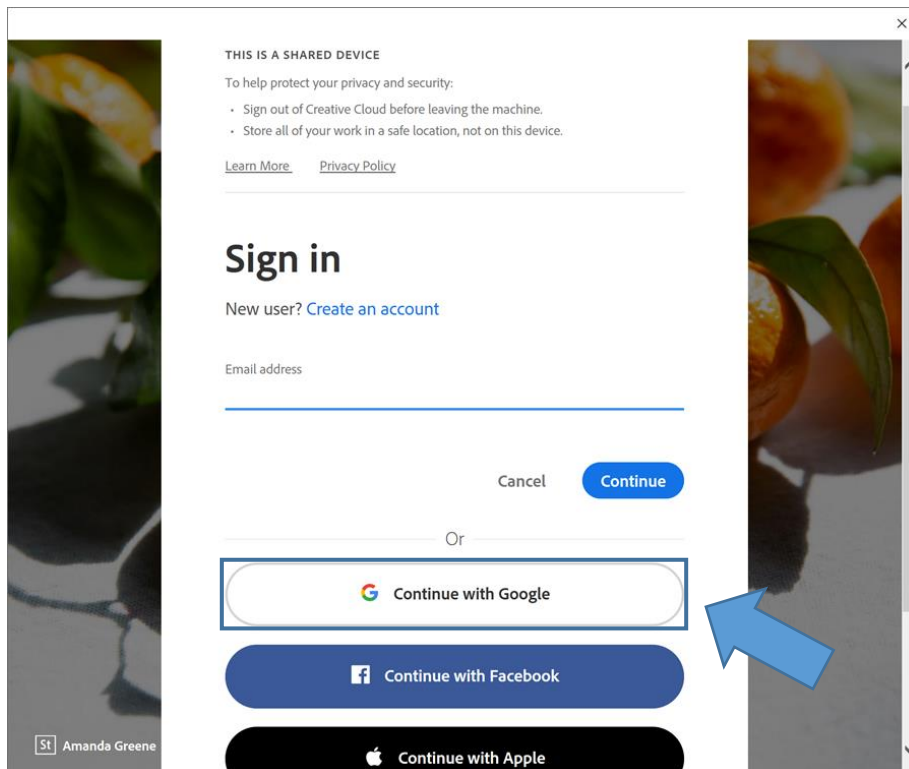


# How to sign into Adobe Applications - Student

1. Open any Adobe application from the Start Menu (i.e. Photoshop, Acrobat, Premiere)

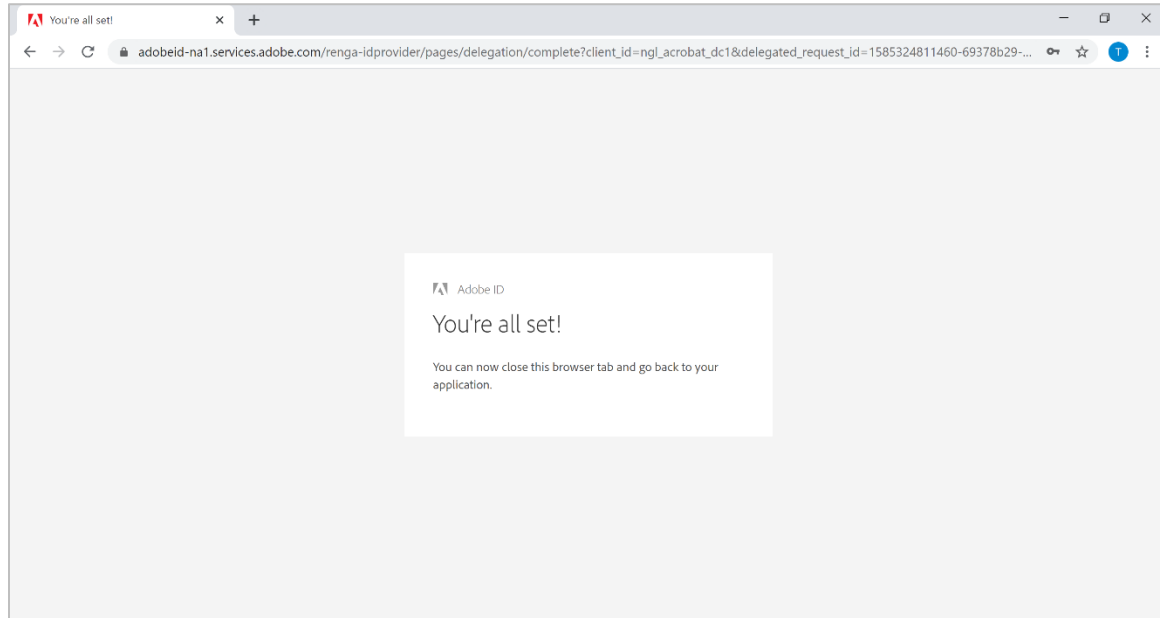


2. Once the application finishes loading, a new window will pop-up



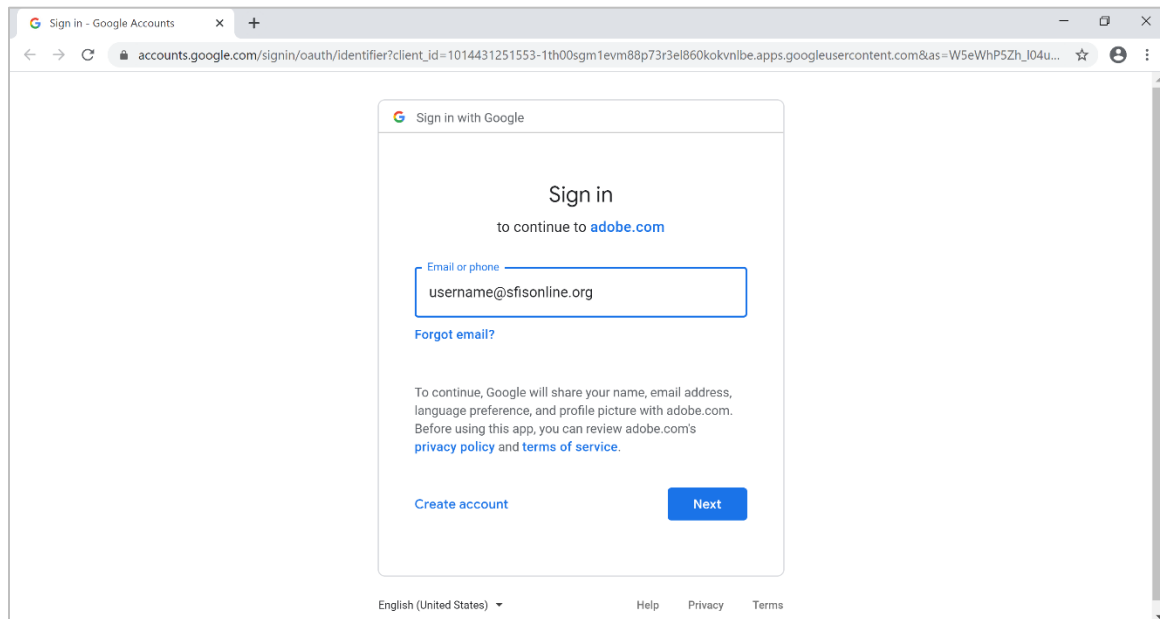
3. Click "Continue with Google"
4. This next step depends on if you're already signed into Google with your sfisonline.org account

## Method 1:

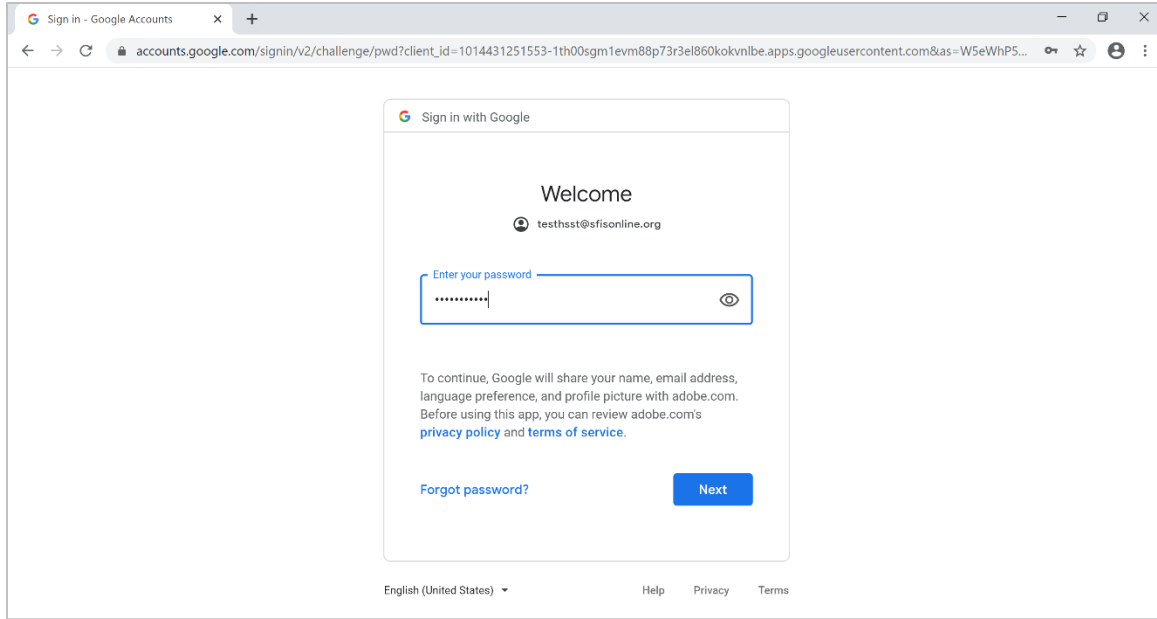


5. If you're already signed into Google with your sfisonline.org account then you will see this window prompt
6. You can close this window and begin using the Adobe Applications

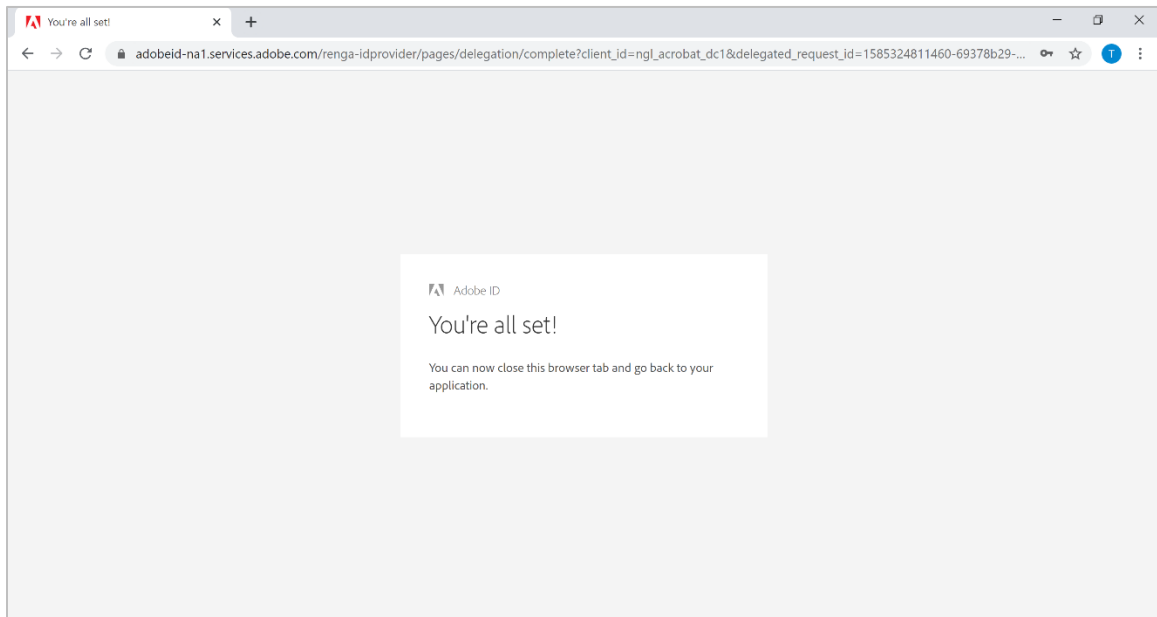
## Method 2:



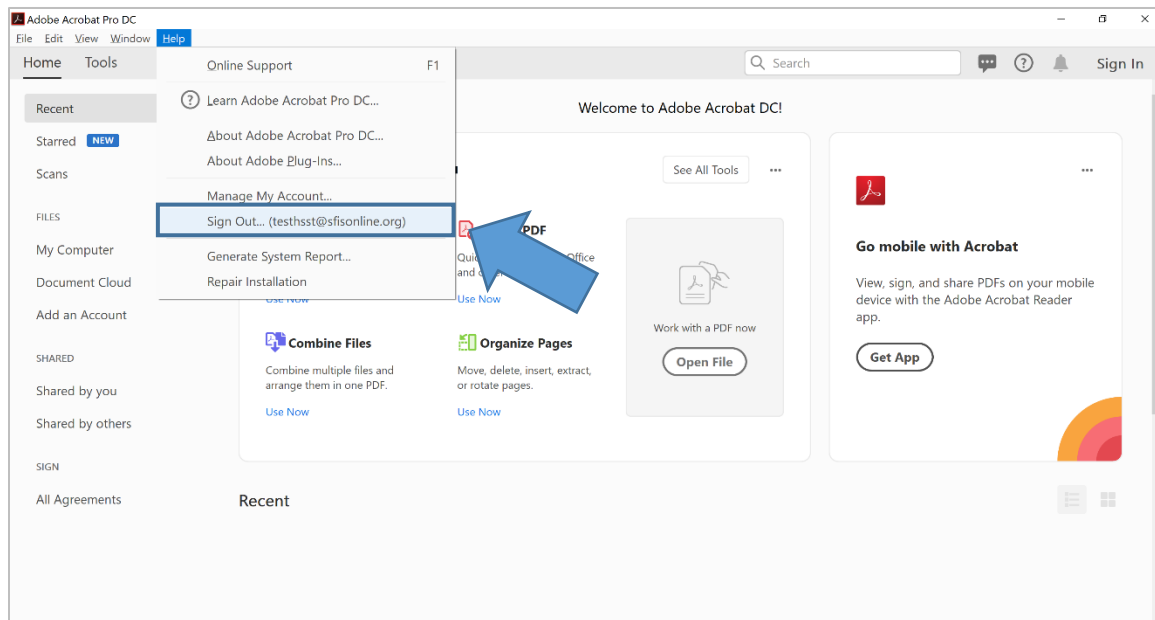
7. If you're not signed into Google with your sfisonline.org account then you will follow these steps
8. You will be redirected to the Google Sign in prompt
9. Enter your sfisonline.org email (ex. [username@sfisonline.org](mailto:username@sfisonline.org)) and click "Next"



10. Enter your password and click “Next”



11. You're all set! Close this browser window and you can begin using the Adobe Applications



12. You can verify that you are signed in by clicking on the “Help” drop down from the taskbar. You should see your email address listed